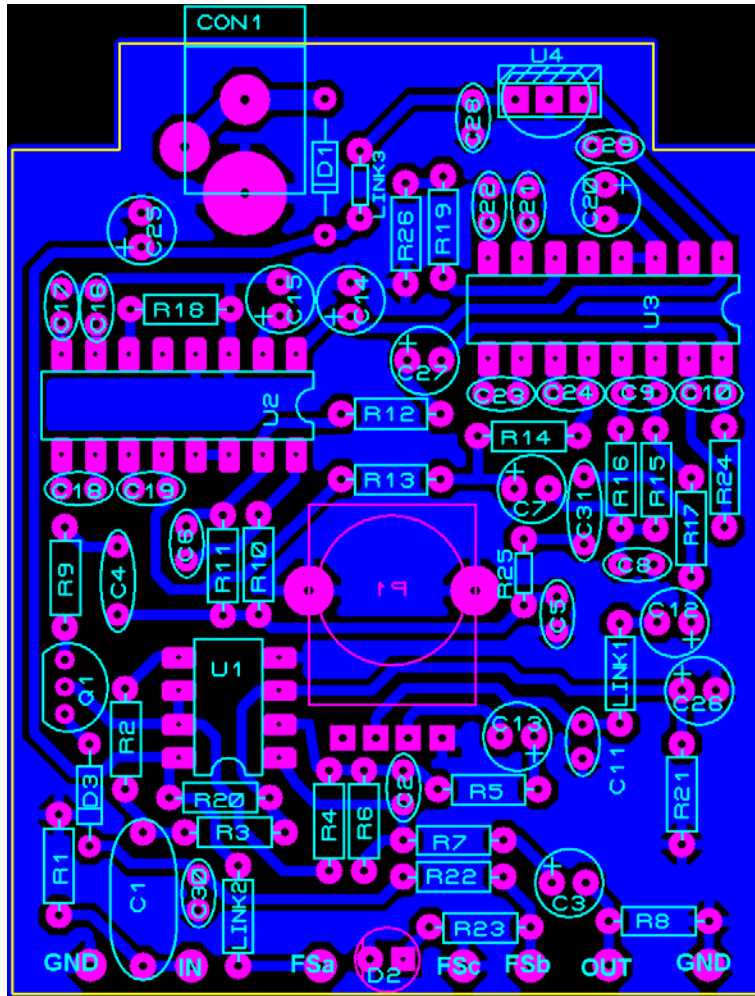


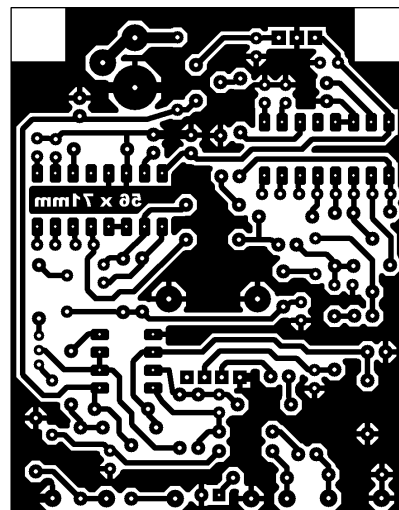
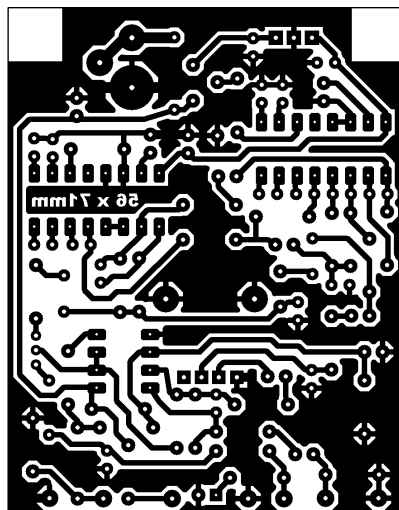
Equinox II

Dual PT2399 Reverb with Tails

By The Valve Wizard



PCB 71 x 56mm



Bill Of Materials For Equinox II

Design Title : Equinox II
Author : The ValveWizard
Revision : 2
Design Created : 24 May 2011
Design Last Modified : 26 June 2013
Total Parts In Design : 70

26 Resistors

<u>Quantity:</u>	<u>References</u>	<u>Value</u>	<u>Notes</u>
1	R1	10M	Optional
2	R2, R7	100	
2	R3, R22	1M	
11	R4-R6, R9, R10, R12-R16, R24	10k	
3	R8, R20, R21	100k	
2	R11, R26	15k	
2	R17, R18	4.7k	
1	R19	2.2k	
1	R23	4.7k	Adjust for LED brightness
1	R25	22k	

31 Capacitors

<u>Quantity:</u>	<u>References</u>	<u>Value</u>	<u>Notes</u>
12	C1, C16-C19, C21-C24, C28, C29, C31	100n	
2	C2, C10	1n	
5	C3, C12, C13, C25, C26	10u	
1	C4	15n	
3	C5, C8, C30	10n	
2	C6, C9	2.2n	
2	C7, C27	1u	Non-polarised
1	C11	47n	
1	C14	10u	1uF to 10uF tantalum preferred
2	C15, C20	47u	

4 Integrated Circuits

<u>Quantity:</u>	<u>References</u>	<u>Value</u>	<u>Notes</u>
1	U1	TL072	
2	U2, U3	PT2399	
1	U4	78L05	

1 Transistors

<u>Quantity:</u>	<u>References</u>	<u>Value</u>	<u>Notes</u>
1	Q1	J112	Other JFETs will work, except J111

3 Diodes

<u>Quantity:</u>	<u>References</u>	<u>Value</u>	<u>Notes</u>
2	D1, D3	1N4148	
1	D2	LED	

5 Miscellaneous

<u>Quantity:</u>	<u>References</u>	<u>Value</u>	<u>Notes</u>
1	CON1	2.1mm	
3	LINK1-LINK3	0	
1	P1	10k	

25 August 2013 12:12:49

